

MINNESOTA STATE HIGH SCHOOL LEAGUE



2013-2014 ANNUAL REPORT

2100 Freeway Boulevard, Brooklyn Center, MN 55430

| 763-560-2262

| mshsl.org

2013–2014 MSHSL Board of Directors



John Hamann
Underwood
President



Scott McCready
St. Charles
Vice President



Steve Eklund
Braham
Treasurer



Steve Beals
Montevideo



Laurie Esau
Orono



Tom Graupmann
Northfield



Bob Grey
Montevideo



Shelly Hotzler
Jackson County Central



Dan Johnson
Hopkins



Mike Kolness
Ada-Borup



Emmett Keenan
St. Cloud Cathedral



Mike Manning
Rosemount



Erich Martens
Sauk Rapids-Rice



Chris McDonald
Eagan



Lea B. Olsen
Minneapolis



Mike Olson
Little Falls



Deborah Pauly
Jordan



Roz Peterson
Lakeville



Lane Powell
Fillmore Central



Mark Solberg
Cambridge-Isanti

2013–2014 Representative Assembly Delegates

The rulesmaking body of the Minnesota State High School League

CLASS A REGIONS

Region 1A

1. Scott Flattum, Activities Director, Plainview-Elgin-Millville
2. Al Nelson, School Board Member, Wabasha-Kellogg
3. Tony Simons, Superintendent, Zumbrota-Mazeppa Schools

Region 2A

4. Ted Simon, Principal, St. James
5. Steve Wolff, Activities/Athletic Director, Buffalo Lake-Hector-Stewart
6. Rob Norman, Activities/Athletic Director, Blue Earth Area

Region 3A

7. Tim Knapper, Activities Director, Yellow Medicine East, Granite Falls
8. Bryce Pack, Athletic Director, Red Rock Central, Lamberton
9. Todd Oye, Athletic Director, Luverne

Region 4A

10. Chris Laird, Athletic Director, Heritage Christian Academy, Maple Grove
11. Mike Brown, Assistant Administrator, St. Paul Academy & Summit School
12. Dave Mergens, Athletic Director, St. Paul Humboldt

Region 5A

13. John Vraa, Athletic Director, New London-Spicer
14. Eric Johnson, Boys' Hockey Coach/Teacher, St. Cloud Cathedral
15. Michael Johnson, Athletic Director, Foley

Region 6A

16. Wayne Olson, Superintendent/Principal, Campbell-Tintah
17. Mike Ortmann, Music Representative, Wadena-Deer Creek
18. Becca Pulju, At Large, Sebeka

Region 7A

19. Kathy Fredricksen, Athletic Director, Moose Lake
20. James Lah, Fine Arts, Ely
21. Chad Stoskopf, Athletic Director, Esko

Region 8A

22. Tim Lutz, Superintendent, Kelliher
23. Jim Scanlan, Activities Director, East Grand Forks
24. Travis Smith, Girls' Sports Representative, Grygla

CLASS AA REGIONS

Region 1AA

25. Brad Skogerboe, Athletic Director, New Prague
26. Lisa Quednow-Bickler, Athletic Director, Austin
27. Paul Cox, Athletic Director, Rochester John Marshall

Region 2AA

28. Bruce Remme, Activity Director, Marshall
29. Tom Bauman, Activity Director, Buffalo
30. Dick Ungar, Assistant Principal, Chanhausen

Region 3AA

31. Greg Juba, Teacher/Coach, Park, Cottage Grove
32. Jeff Marshall, Activities Director, Burnsville
33. Matt Percival, Activities Director, Eastview, Apple Valley

Region 4AA

34. Jed Helwig, Athletic Director, North, North St. Paul
35. John Brodrick, School Board Member, St. Paul Schools
36. Tim Coleman, Teacher/Coach, St. Paul Harding

Region 5AA

37. Ron Zopfi, Activities Director, Maple Grove
38. Shannon Gerrey, Activities Director, Blaine
39. Mike Smith, Activities Director, Totino-Grace, Fridley

Region 6AA

40. Darren Ginther, Athletic Director, Minneapolis Edison
41. Andy Ewald, Athletic Director, St. Louis Park
42. Dave Wicker, Assistant Director of Athletics, Minneapolis Public Schools

Region 7AA

43. Beth Clark, Activities Director, Hermantown
44. Tom Lenarz, Activities Director/Head Football Coach, Cloquet
45. Mike Cunningham, Activities Director, Elk River

Region 8AA

46. Troy Hendricks, Activity Director, Bemidji
47. John Ross, Activities Director, Sartell
48. Gary Revenig, Activities Director, Monticello

MSHSL Administrative Staff

Executive Director..... David Stead
Executive Assistant..... Lynne Johnson
Associate Director..... Lisa Lissimore
Administrative Assistant..... Sheila Robinson
Associate Director..... Kevin Merkle
Administrative Assistant..... Amanda Johnson
Officials' Coordinator..... Katie Schulte
Associate Director..... Jody Redman
Administrative Assistant..... Amie Ince

Associate Director..... Susi Perry
Administrative Assistant..... Susi Hollenbeck
Assistant Director..... Richard Matter
Accounting Assistant..... Sharon Bahma
Ticket Assistant..... Nancy Myers
Assistant Director..... Chris Franson
Web Site Coordinator..... Nancy Etter
Graphic Designer..... Tracie Bressler

Director of Information..... Howard Voigt
Assistant Information Director..... Ellen Rajkowski
Media Credentialing Assistant..... Yvonne Walsh
Media Specialist..... John Millea
Program Specialist..... Amy Doherty
Office Manager..... Kristi Vesall
Administrative Assistant..... Yvonne Walsh
Receptionist..... Ann Bailey

PRESIDENT'S REPORT

I was very honored to have served as the president of the Minnesota State High School League Board of Directors during the 2013-2014 school year. Every year school boards and school communities, like the League, face programmatic and economic challenges, but the focus of the League's Board of Directors is on policy decisions that provide appropriate and accessible education-based athletic and fine arts activities for students in our member schools in as many ways as possible.



Tournament related proposals, as well as expanded activities, continue to be addressed by the Board of Directors. Education Requirements for head coaches, assistant coaches, and activity directors were reviewed and modified; new training modules were developed; the state-mandated concussion education was monitored; educational initiatives through on-line rules meetings were both developed and enhanced; and the *Why We Play Conference* continues to train coaches and activity directors in conferences throughout the state. This first-time workshop in 2013 drew rave reviews from coaches and presenters alike, and the second workshop held at St. Thomas University in 2014 drew nearly 215 new attendees.

Some of the other actions approved by the Board include:

- o Seven specific and strategic goals for the 2013-14 school year.
- o Future football and soccer tournament dates and sites due to the demolition of the Metrodome.
- o An increase in the official squad size for baseball teams from 18 to 20.
- o District football scheduling in support of all member schools.
- o Expansion of the state girls' fast-pitch softball tournament from three to four classes.
- o A policy that requires all athletic administrators to complete continuing education requirements every three years.
- o Review of a transgender policy.
- o Continued financial support for the MSHSL Foundation.
- o Working with the Academic Decathlon in order to increase participation.
- o Distribution of the Listening to Students Survey.

The League staff conducts fall and spring area meetings throughout the state in order to share with and gather information from administrative groups, coaches associations, and others involved in education-based activity programs. This input will form the Board of Director goals for the 2014-2015 school year.

My four years as a member of the MSHSL Board of Directors have flown by. I want to thank the Minnesota Association of Secondary School Principals (MASSP) for the confidence they placed in me to represent the MASSP and all stakeholders in Minnesota. Moreover, I want to assure our entire membership that the board and staff listens to the input provided by all interested parties well in advance of any decision-making. Board members have always set policy guidelines without regard to personal agendas, and a thoughtful discussion always preceded any action item on the agenda.

As with all successful organizations, the strength of the League lies in the collective willingness to receive information shared with your Board of Directors representative(s) and the support provided by the League staff who carry out each new initiative with consistency and enthusiasm. And, the integrity and trust placed on each coach, advisor, and administrator provides a solid foundation upon which success can be achieved.

Thank you, again, for allowing me to serve our students, our member schools, and our school communities as the president of the MSHSL Board of Directors.

A handwritten signature in black ink that reads "John Hamann".

John Hamann
Underwood High School
MSHSL Board of Directors, President
2013-2014

Mission

The Minnesota State High School League is a non-profit, voluntary association of public and private schools with a history of service to Minnesota youth since 1916. Its mission is to provide educational opportunities through interscholastic athletics and fine arts programs for students and leadership and support for member schools.

We believe:

- o Participation in school activity programs is a privilege and not a right.
- o Sportsmanship needs to have a constant presence in all school-based activity programs.
- o Students should have an equal opportunity to participate in all activities offered by their school.
- o Ethical behavior, dignity and respect are non-negotiable.
- o Student participants who choose to be chemically free must be supported.
- o Collaborative relationships with parents enhance a school's opportunity to positively impact student success.
- o Academic priorities must come before participation in athletics or fine arts activities.
- o Positive role models and an active involvement in a student's life by parents and others are critical to student success.
- o High school activity programs are designed for student participants and adults must serve in a supportive role.
- o The success of the team is more important than individual honors.
- o Compliance with school, community and League rules is essential for all activity participants.
- o Participation in school-sponsored activities must be inclusive, not exclusive.
- o Ethical behavior, fairness, and embracing diversity best serve students and school communities.

History

The Minnesota State High School League was first organized in 1916 by a group of local superintendents. Then called the State High School Athletic Association, its mission was to promote amateur sports for boys and establish uniform rules for interscholastic contests.

In 1929, the Association broadened its scope to include speech and debate, and the Association's name changed to the Minnesota State High School League.

In 1960, the League incorporated under Minnesota Law as a non-profit, voluntary association of high schools. The League added music to its list of sponsored activities in 1965 and girls' athletics in 1969.

In 1973, Minnesota statutes provided that membership in the League is available to any high school in Minnesota that satisfied the compulsory attendance requirement under Minnesota Law. Thirty-seven non-public schools joined the League the next year.

A review of the League eligibility rules in 1980 resulted in the creation of TARGET Minnesota, an award-winning program that supports chemically free student leaders.

During the 1990's the League became the first activity association in the nation to sponsor girls' ice hockey. In 1993, the organization took on a new challenge and now offers adapted athletic programs for students with disabilities.

In 2007, the Minnesota State High School League Foundation was created to promote student participation in interscholastic athletics and fine arts activities. The Foundation has awarded more than a million dollars in grants to fulfill its mission.

Today, more than 500 high schools are League members. Those schools provide athletic and fine arts activities for more than 200,000 students statewide.

Services to Member Schools

The Minnesota State High School League is a service organization providing its membership with publications, training opportunities, recognition programs, post-season tournaments, rules interpretation meetings, and many other services that assist in the administration of interscholastic activities.

The League serves students first and foremost, providing educational experiences through participation in athletics and fine arts activities. Interscholastic competition leads to state tournament competitions which are conducted by the League. Students also are acknowledged through several recognition programs for academic achievements, community service, and leadership.

The League serves its 525 member schools by providing competitive environments with rules that support fair play and equitable competition. School personnel, from elected local school board members to superintendents, from principals to athletic/activity directors, are invited twice annually to area meetings throughout the state to share concerns and discuss issues.

The League serves coaches and contest officials by providing educational and training opportunities. Through the Continuing Education Requirement, coaches of all levels can learn about concussion management, emergency response planning, and the rules that govern both student eligibility and the activities they oversee. Officials are provided with online meetings to review contest rules and are provided opportunities for further training in the mechanics of officiating.

The League serves the public in general as a complimentary extension of the classroom by providing activities for high school youth that teach lifelong lessons and develop responsible citizens. Communication with the general public takes many forms, not the least of which is a comprehensive web site—www.mshsl.org.

Grassroots Governance

As a non-profit, voluntary association of public and private schools, the League is structured to listen to and respond to its members. Individual school boards decide every year to join the League. Each member school and its composite constituencies—students, parents, coaches, administrators, and school board members—have a voice at the grassroots level known as an administrative region.

Region Committees

A region committee comprised of representatives from League member schools manages the activities and events associated with each administrative region. Each of these 16 committees make decisions about how subsection and section competition is conducted; elect or appoint three people to serve on the Representative Assembly which acts on bylaws that govern eligibility and the administration of League activities; and they review proposed changes to League bylaws before consideration by the Representative Assembly. The committees also report to the 20-member Board of Directors, which oversees the administration of all League activities and events.

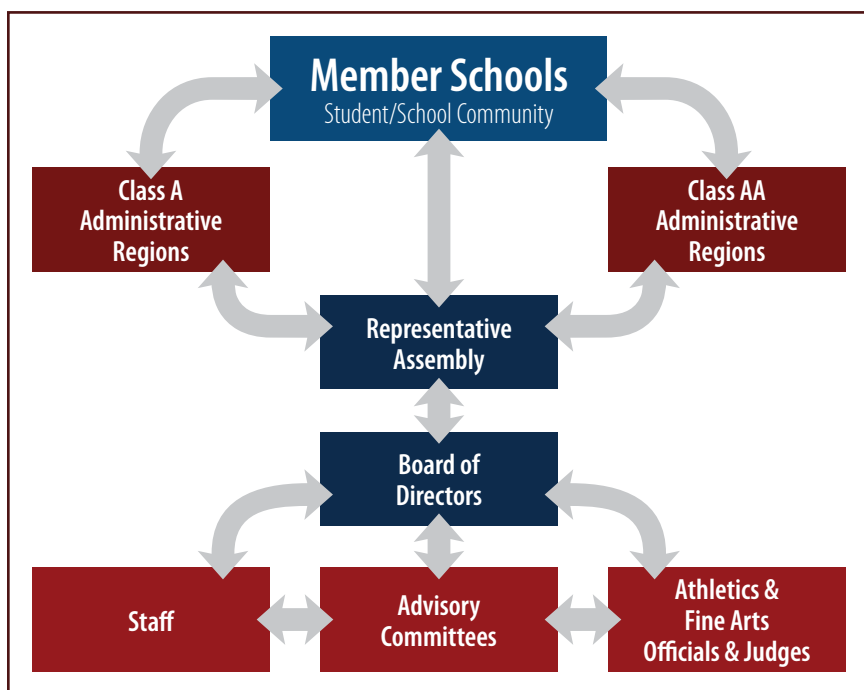
Representative Assembly

Forty-eight people, representing the League’s membership, comprise the Representative Assembly, the League’s legislative body. The Assembly meets annually to consider all bylaw proposals that come from League member schools, region committees, the Board of Directors, and state athletics and fine arts associations. League bylaws govern the addition of new activities, season lengths, number of contests, eligibility standards, and amateurism requirements of student athletes and fine art participants. Bylaws also set requirements for conduct, enrollment, and they give direction to scholarship, student transfers, and many other areas important to the sound administration of high school athletic and fine arts programs.

Activity Advisory Committees

Activity Advisory committees provide direct information to the Board of Directors about activity programs. These committees—there’s one for each activity the League sponsors—meet once a year to review and recommend changes to athletic and fine arts programs. Activity associations appoint people to serve on the advisory committees. Committee members generally serve two-year terms.

The intent is to involve everyone from students and their parents and coaches to school administrators and their elected school board members, in the League’s decision-making process.



Bylaw Changes

The Representative Assembly approved the following bylaw amendments during the 2013-2014 school year:

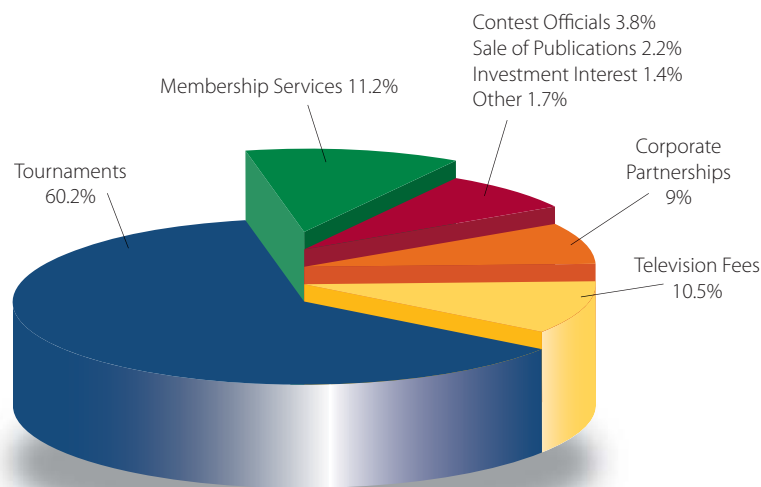
- **Bylaw 111—Transfer and Residence:**
Allows students a 15-day period to return to the student’s original school after a transfer provided the student has not competed at the varsity level in any sport during that time period.
- **Bylaw 201—Amateur Status:**
Allows for actual and reasonable reimbursement for participation in a camp or clinic and clarifies that participation with a professional team negates a student’s amateur status, but allows a tryout with a professional team in specific circumstances
- **Bylaw 205—Chemical Eligibility:**
Expands the definition of tobacco products to include e-cigarettes. Also expands the definition of controlled substances to include synthetic substances.
- **Bylaw 208—Non-School Competition and Training:**
Defines what a coach can or cannot do during the 7-day no-contact period during the summer waiver months of June and July. A second amendment defines the type of football practice that may take place during the summer waiver months and pre-season period.
- **Bylaw 411—Scheduling of Contests:**
Identifies the requirements that must be in place for a League member school to schedule contests with a program that is not a member school of the League.
- **Bylaw 502—Daily/Season Player Participation Limits:**
Imposes a daily limit of not more than 6.5 quarters during any consecutive three-day period for football players.

The Minnesota State High School League is a non-profit organization. The League operates on an annual budget of about \$8.6 million and receives no funding from the state legislature.

Revenues generated from tournament ticket sales, broadcast rights fees, and other tournament related-income make up the majority of the League’s operating budget. The remaining portion of the budget comes from corporate sponsorships, publication sales, registration fees and investment income.

At the end of each fiscal year, revenue remaining after all expenses are paid, is distributed to member schools fortunate enough to have competed at the state level. Those shares of revenue during the past 10 years have averaged \$702,000 each year, an average of \$1,800 per school.

The Office of the State Auditor for Minnesota audits all financial records of the League. The audit report is mailed to League member schools.

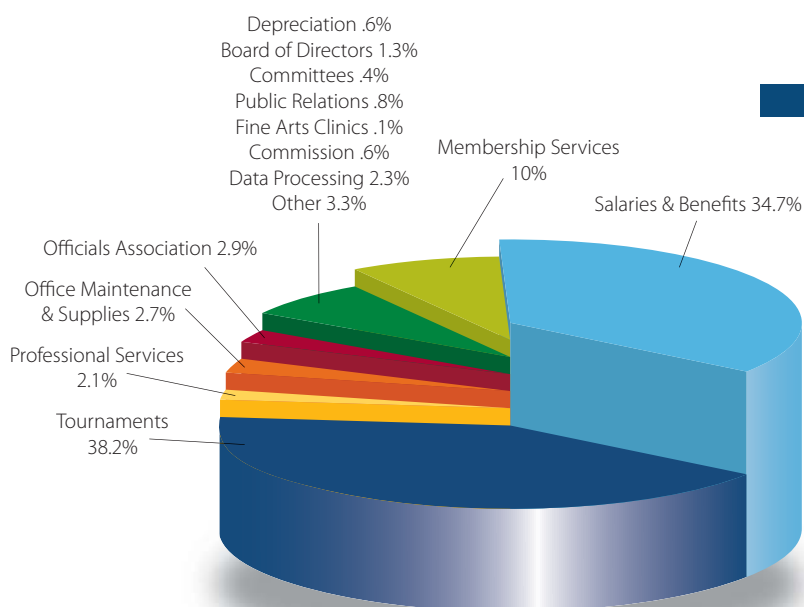


REVENUES \$8,642,344

- Tournaments \$5,205,972
- Television Fees \$904,128
- Membership Services \$968,249
- Sale of Publications \$193,722
- Contest Officials Registration \$330,517
- Investment Interest \$119,886
- Corporate Partnerships \$773,629
- Other \$146,241

EXPENSES \$8,620,191

- Tournaments & School Reimbursements \$3,288,513
- Salaries & Benefits \$2,995,200
- Professional Services \$180,555
- Membership Services \$859,789
- Office Maintenance & Supplies \$230,031
- Other \$287,422
- Board of Directors \$108,094
- Committees \$32,201
- Officials Associations \$249,539
- Depreciation \$49,694
- Fine Arts Programs \$10,951
- Public Relations \$71,913
- Corporate Partnership Commission \$53,812
- Data Processing/Building/Equipment \$202,477



Comparative Schedule of Tournament Revenues and Direct Expenses for the Years Ended July 31, 2014 and 2013

| Tournament | 2014** | | | 2013* | | |
|--------------------------|------------------|------------------|--|------------------|------------------|--|
| | Revenues | Direct Expenses | Excess (Deficiency) of Revenues Over Direct Expenses | Revenues | Direct Expenses | Excess (Deficiency) of Revenues Over Direct Expenses |
| Baseball | 83,544 | 81,408 | 2,136 | 91,705 | 75,705 | 16,000 |
| Boys' Basketball | 569,768 | 254,036 | 315,732 | 562,253 | 224,245 | 338,008 |
| Girls' Basketball | 293,877 | 236,999 | 56,878 | 328,559 | 204,384 | 124,175 |
| Cross Country Running | 16,495 | 34,000 | (17,505) | 15,474 | 27,850 | (12,376) |
| Football | 1,007,768 | 422,859 | 584,909 | 990,452 | 396,168 | 594,284 |
| Golf | 12,581 | 48,561 | (35,980) | 12,674 | 57,322 | (44,648) |
| Girls' Gymnastics | 36,323 | 73,107 | (36,784) | 49,856 | 67,746 | (17,890) |
| Boys' Hockey | 1,506,238 | 383,590 | 1,122,648 | 1,487,593 | 372,456 | 1,115,137 |
| Nordic Ski Racing | 3,609 | 24,275 | (20,666) | 3,820 | 23,621 | (19,801) |
| Alpine Skiing | 4,227 | 25,788 | (21,561) | 4,362 | 26,744 | (22,382) |
| Soccer | 159,879 | 115,488 | 44,391 | 148,361 | 118,010 | 30,351 |
| Girls' Softball | 63,449 | 47,641 | 15,808 | 60,076 | 48,763 | 11,313 |
| Boys' Swimming & Diving | 45,641 | 55,165 | (9,524) | 50,288 | 49,322 | 966 |
| Girls' Swimming & Diving | 51,884 | 53,519 | (1,635) | 52,200 | 49,488 | 2,712 |
| Boys' Tennis | 4,600 | 37,830 | (33,230) | 5,277 | 36,189 | (30,912) |
| Girls' Tennis | 6,752 | 40,532 | (33,780) | 6,355 | 39,771 | (33,416) |
| Track and field | 129,046 | 131,730 | (2,684) | 141,178 | 138,871 | 2,307 |
| Girls' Volleyball | 213,895 | 159,900 | 53,995 | 186,439 | 151,187 | 35,252 |
| Wrestling | 481,261 | 238,749 | 242,512 | 528,905 | 232,748 | 296,157 |
| Synchronized Swimming | 0 | 512 | (512) | 0 | 505 | (505) |
| Adapted Soccer | 7,621 | 17,625 | (10,004) | 7,374 | 18,917 | (11,543) |
| Adapted Floor Hockey | 8,939 | 20,573 | (11,634) | 10,057 | 19,606 | (9,549) |
| Adapted Softball | 5,829 | 18,893 | (13,064) | 6,850 | 19,319 | (12,469) |
| Adapted Bowling | 885 | 13,147 | (12,262) | 1,478 | 13,187 | (11,709) |
| Debate | 0 | 22,700 | (22,700) | 0 | 22,525 | (22,525) |
| Speech | 7,839 | 47,086 | (39,247) | 8,641 | 48,544 | (39,903) |
| One Act Play | 15,902 | 24,660 | (8,758) | 17,774 | 23,393 | (5,619) |
| Girls' Hockey | 237,637 | 228,221 | 9,416 | 259,229 | 220,316 | 38,913 |
| Cheerleading | 0 | 706 | (706) | 0 | 1,254 | (1,254) |
| Girls' Dance Team | 188,729 | 96,374 | 92,355 | 190,374 | 97,042 | 93,332 |
| Lacrosse | 34,234 | 45,662 | (11,428) | 44,247 | 43,693 | 554 |
| Badminton | 0 | 288 | (288) | 0 | 0 | 0 |
| Visual Arts | 0 | 208 | (208) | 0 | 959 | (959) |
| Robotics | 6,051 | 45,530 | (39,479) | 5,459 | 37,337 | (31,878) |
| Clay Target | 1,469 | 13,950 | (12,481) | 0 | 0 | 0 |
| Total | 5,205,972 | 3,061,312 | 2,144,660 | 5,277,310 | 2,907,187 | 2,370,123 |

The tournament direct expenses shown above include only those expenses that are directly associated with conducting the tournaments (i.e. personnel and site and program costs). School expense reimbursement and indirect costs such as membership services, salaries and benefits, postage, and other general administrative costs of the MSHSL have not been allocated to any specific tournaments and therefore, are not included in the schedule shown above.

* From State Auditor's Report ** End of year balance on League financial statements

A 10-Year Comparison of School Expense Reimbursements for Tournament Participation & Activity Registration Refunds**

| | Number of Schools Participating | Total Amount Returned | Average Per School |
|---------|------------------------------------|--------------------------|-----------------------|
| 2004-05 | 364 | 671,022 | 1,843 |
| 2005-06 | 365 | 600,689 | 1,645 |
| 2006-07 | 360 | 692,930 | 1,925 |
| 2007-08 | 365 | 870,259 | 2,384 |
| 2008-09 | 487 | 1,084,736 | 2,227 |
| 2009-10 | 489 | 822,524 | 1,682 |
| 2010-11 | 359 | 625,388 | 1,742 |
| 2011-12 | 369 | 693,679 | 1,880 |
| 2012-13 | 373 | 712,450 | 1,910 |
| 2013-14 | 377 | 244,964 | 650 |

MSHSL CALENDAR OF EVENTS

2014–2015

| ACTIVITY | TOURNAMENT DATES | TOURNAMENT SITE |
|--------------------------------------|---------------------------------------|---|
| FALL | | |
| Girls' Tennis | October 21–24 | AA – University Baseline Tennis Center, Minneapolis A – Reed-Sweatt Family Tennis Center, Minneapolis |
| Boys' & Girls' Soccer | October 21–23 October 28–30 | Quarterfinals – Various Sites Semifinals & Finals – Husky Stadium, St. Cloud University |
| Boys' & Girls' Cross Country Running | November 1 | St. Olaf College, Northfield |
| Girls' Volleyball | November 6–8 | Xcel Energy Center, St. Paul |
| Girls' Swimming & Diving | November 12–14 | University Aquatic Center, Minneapolis |
| Adapted Soccer | November 14–15 | Stillwater Area High School |
| Football | November 6–8, 13–15 November 21–22 | Quarterfinals & Semifinals – Various Sites Prep Bowl – TCF Bank Stadium, Minneapolis |
| WINTER | | |
| Debate | January 16–17 | University of Minnesota, Minneapolis |
| Music Contests/Festivals | January–May | TBD by each region |
| Boys' & Girls' Alpine Skiing | February 11 | Giants Ridge, Biwabik |
| Boys' & Girls' Nordic Ski Racing | February 12 | Giants Ridge, Biwabik |
| One Act Play | February 12–13 | The O'Shaughnessy, St. Catherine University, St. Paul |
| Girls' Dance Team | February 13–14 | Target Center, Minneapolis |
| Girls' Hockey | February 18–21 | Xcel Energy Center, St. Paul |
| Girls' Gymnastics | February 20–21 | University Sports Pavilion, Minneapolis |
| Wrestling | February 26–28 | Xcel Energy Center, St. Paul |
| Boys' Hockey | March 4–7 | Xcel Energy Center, St. Paul |
| Boys' Swimming & Diving | March 5–7 | University Aquatic Center, Minneapolis |
| Boys' Basketball | March 11–14 | Target Center, Minneapolis & Williams Arena, Minneapolis |
| Adapted Floor Hockey | March 13–14 | Bloomington Jefferson High School |
| Girls' Basketball | March 17–21 | Target Center, Minneapolis & Williams Arena, Minneapolis |
| SPRING | | |
| Speech | April 17–18 | Lakeville North High School |
| Adapted Bowling | May 15 | Brunswick Zone, Brooklyn Park |
| Robotics | May 16 | Williams Arena, Minneapolis |
| Adapted Softball | May 29–30 | Coon Rapids High School |
| Boys' Tennis | June 2–5 | AA – University Baseline Tennis Center, Minneapolis A – Reed-Sweatt Family Tennis Center, Minneapolis |
| Girls' Fast-Pitch Softball | June 4–5 | Caswell Park, North Mankato |
| Boys' & Girls' Track & Field | June 5–6 | Hamline University, St. Paul |
| Boys' & Girls' Golf | June 9–10 | AAA – Bunker Hills, Coon Rapids AA – Ridges at Sand Creek, Jordan A – Pebble Creek, Becker |
| Boys' & Girls' Lacrosse | June 9, 11 & 13 | Chanhassen & Chaska High Schools |
| Baseball | June 11–12 | AAA – Midway Stadium, St. Paul & Dick Siebert Field, University of MN, Minneapolis AA – Dick Putz Stadium & Joe Faber Field, St. Cloud A – Athletic Park, Chaska & Mini Met, Jordan |
| | TBD | Championship Games – Target Field, Minneapolis |
| Clay Target | TBD | Minneapolis Gun Club, Prior Lake |

Photography Credits: Minnesota Prep Photo / www.MnPrepPhoto.com

This report is a publication of the Minnesota State High School League.

No reproduction of this document is permissible without the written consent of the Minnesota State High School League.